

# USPF 2019 MEN & WOMEN NATIONALS

**~JUNE 15 & 16~SATURDAY/SUNDAY**

**To be Held at "Junction 707"**

**707 E. Allen St., corner 7<sup>th</sup> & Allen, TOMBSTONE, AZ**



**Contact: [USPFtheLegend@aol.com](mailto:USPFtheLegend@aol.com)**

**~DIRECTIONS FROM TUCSON INTERNATIONAL AIRPORT TO TOMBSTONE~**

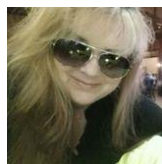


**TOMBSTONE IS 66 MILES FROM TUCSON INTERNATIONAL AIRPORT. WHEN YOU LEAVE TIA, TURN RIGHT ON VALENCIA ROAD. GO ABOUT 4 MILES TO INTERSTATE 10, TURNING RIGHT ON THE ON-RAMP HEADING EAST. WHEN YOU REACH EXIT 303, TURN RIGHT AT BOTTOM OF OFF-RAMP. STAY ON HIGHWAY 80 (CALLED 4<sup>TH</sup> STREET IN BENSON) ALL THE WAY TO TOMBSTONE, ABOUT 26 MILES. (WHEN YOU ARE LEAVING BENSON, BE SURE TO "VEER TO THE RIGHT" TO STAY ON HIGHWAY 80.) ONCE IN TOMBSTONE, HIGHWAY 80 TURNS INTO FREMONT STREET.**



**TO GET TO THE MEET SITE, STAY ON FREMONT TO 6<sup>TH</sup> STREET, TURN RIGHT. AT THE STOP SIGN, TURN LEFT AND GO ONE BLOCK.**

**~2019 USPF NATIONAL'S CO-MEET DIRECTOR~**



**SHERI HARTMANN**

USPF EXECUTIVE COMMITTEE MEMBER, USPF AMERICAN RECORDS CHAIR, USPF CLASSIFICATIONS & AWARDS CHAIR, USPF NATIONAL REFEREE, OWNER and WEBMASTER FOR [www.USPFtheLEGEND.com](http://www.USPFtheLEGEND.com) & OWNER OF "JUNCTION 707" & "ReVAMP BUILDING".

**~2019 USPF NATIONAL'S CO-MEET DIRECTOR~**



**DANNI ELDRIDGE**

USPF EXECUTIVE COMMITTEE MEMBER, PAST USPF REGION 7 CHAIR AND AZ STATE CHAIR, RETIRED USPF COMPETITOR (OPEN & MASTERS) INCLUDING USPF CA POLICE OLYMPICS AND WORLD POLICE & FIRE OLYMPICS, USPF NATIONAL REFEREE, INTERIM USPF AZ STATE CHAIR, USPF CA HALL OF FAME INDUCTEE AND USPF CA POLICE & FIRE HALL OF FAME.

[www.dannieldridge.com](http://www.dannieldridge.com)



**WE HAUL OUR EQUIPMENT TO WHERE EVER.**

**~HAVE GUN AND TRUCK, WILL TRAVEL~**